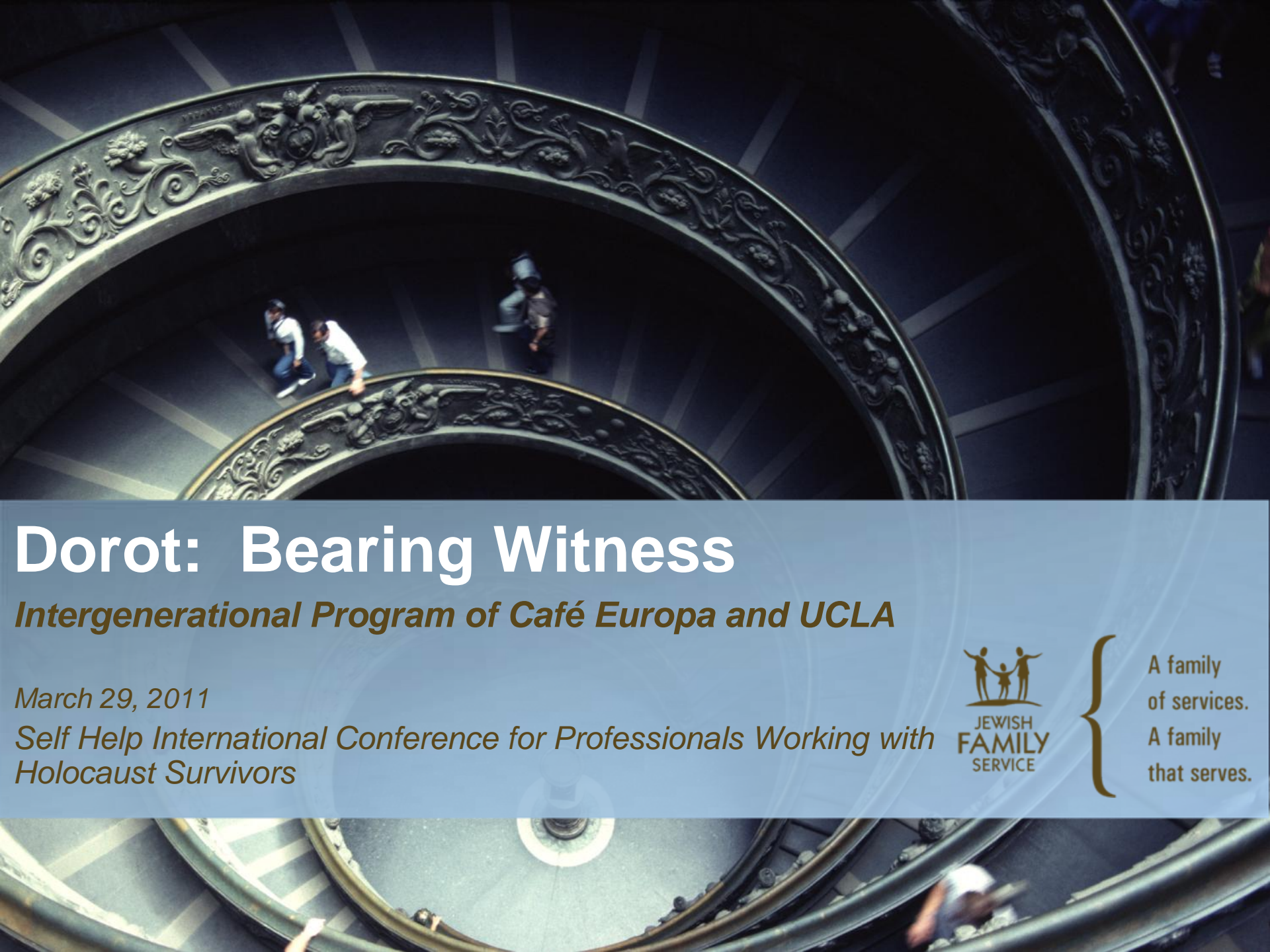




A family
of services.
A family
that serves.



Dorot: Bearing Witness

Intergenerational Program of Café Europa and UCLA

March 29, 2011

Self Help International Conference for Professionals Working with Holocaust Survivors



A family
of services.
A family
that serves.

Introduction

- Jewish Family Service of Los Angeles (JFS)
- 10,000 Survivors in Los Angeles County

JFS Café Europa

- Beginnings in Los Angeles
 - 1987
 - One location
 - 10 attendees
- Today
 - Multiple locations
 - Over 100 attendees weekly



Generation to Generation Concept



- Establishing Individual relationships
- Telling the Story
- Validating the Holocaust experience

Mission

- To build an extended and meaningful relationship between UCLA Hillel students and Holocaust survivors
- Bridging gaps between generations and increasing awareness, understanding and validation of life experiences, and reflection of life choices with renewed hope for the future.

Dorot: Bearing Witness

Format

- Introductory student meeting with the Café Europa Coordinator
- 4 biweekly sessions during the quarter over lunch
- Small groups composed of a survivor and 1-3 students
- Fifth meeting includes wrap up with the entire group



Third year Jewish Service Learning Project

- Introduction of the UCLA German Linguistics Honors Class into the partnership
- Increase meaning of collaboration around central themes of Jewish values such as *Tikkun Olam*, *Tzedek*, *Gemilut Chasadim*, and *Dorot*
- Create a civic engagement ethos in Jewish Studies
- Attracted students from diverse cultures. Many non-Jewish first generation Americans
- Created digital histories of the survivor experience

Results of 2010 Experience

- 92% of students stated they had a deeper appreciation of the importance of helping and/or listening to others. They also became more aware of community needs.
- 83% of students stated that this course made them more aware of their own biases and prejudices.
- They all agreed that the program gave them a deeper appreciation of other cultures/backgrounds. And that the experience was one they would never forget.



- Mapping the Survivor's Journey
 - This (fourth) year's class project
 - Following the survivor's geographical journey from birth to now
- Sharing the Global Experience
 - Discrimination
 - Genocide
 - Human Experience
 - Respect for Life, Human Worth

Student Thoughts

- New take on life and survivorship
- Looking differently at seniors as a cohort
- Revising their value system

I loved the Bearing Witness course!

It was such a wonderful experience and I am utterly grateful.

It made me put my own life in perspective and appreciate the privileges I have.

**Senior Neuroscience Student, Female,
Assyrian and Christian**



Survivor's Thoughts

- Healing effect on survivorship
- Validation of the experience
- Genuine interest in the younger generation

I could not believe that this young person would be so interested in my experience. My advice is to live life to the fullest and never take anything for granted.

**Hungarian Holocaust Survivor,
Budapest ghetto, Auschwitz camp**



Conclusion

Closing thoughts

- Important for the stories to be remembered
- Urgent to provide opportunities now before our survivors pass away
- Provide inspiration for overcoming obstacles
- Instills a passion for civic engagement in student's own community
- Commitment to create a more just society
- Form lasting bonds

Replicability

- Both High School and College student populations
- Increased opportunities for directed service in the broader community
- Increased opportunity for learning about the Holocaust
- Jewish and non-Jewish groups
- Teach values of tolerance, justice and respect for diversity



THANK YOU